

Graphs

A quick task

- 1) I'm trying to save up for a big screen TV. I make the decision to have \$55 of each monthly paycheck go towards the TV savings fund (previously my rainy day fund). After 4 paychecks, I have a total of \$540.
 - a) How much money did I have in my savings account when I first decided to make it a TV fund?
 - b) How much money do I have in my savings account after 8 months?
 - c) Sketch a graph that shows how much money I have saved at each moment in time during the first 8 months after I make the change.

Student Answers

$$\begin{array}{r} 395 \\ - 320 \\ \hline 75 \end{array}$$

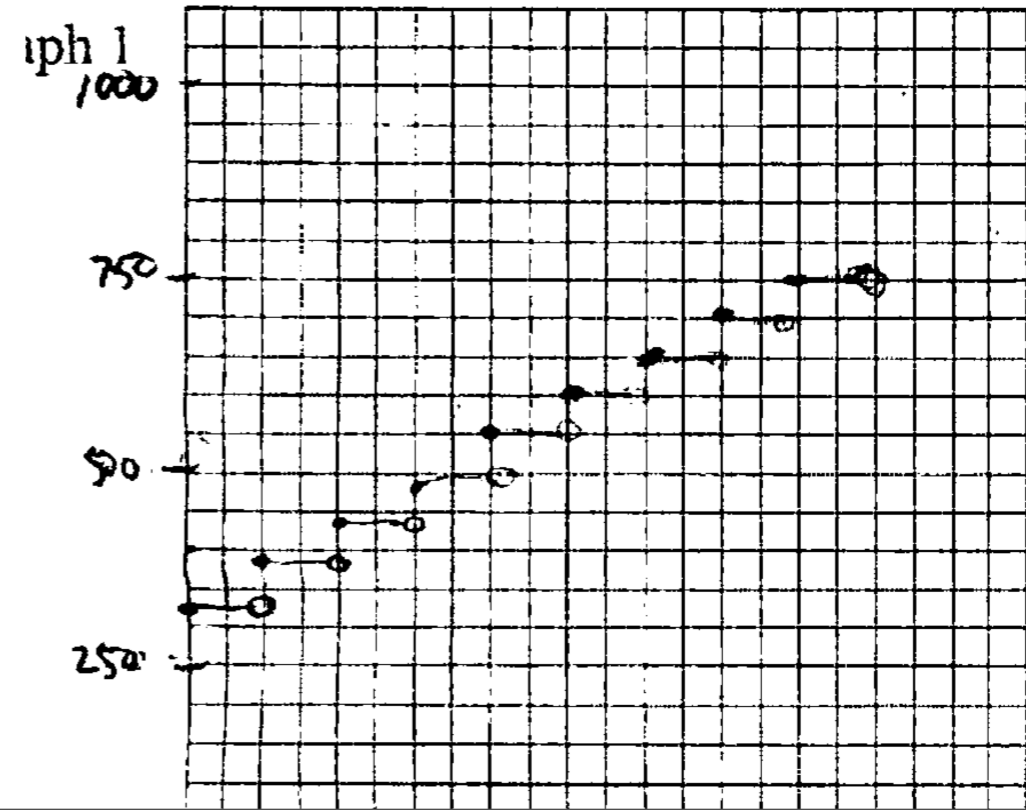
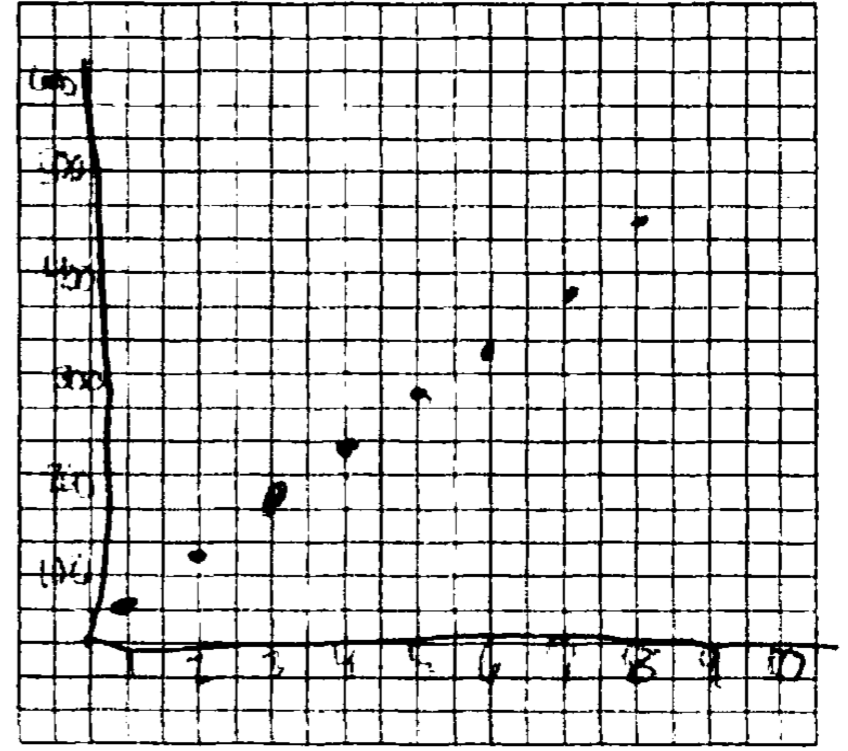
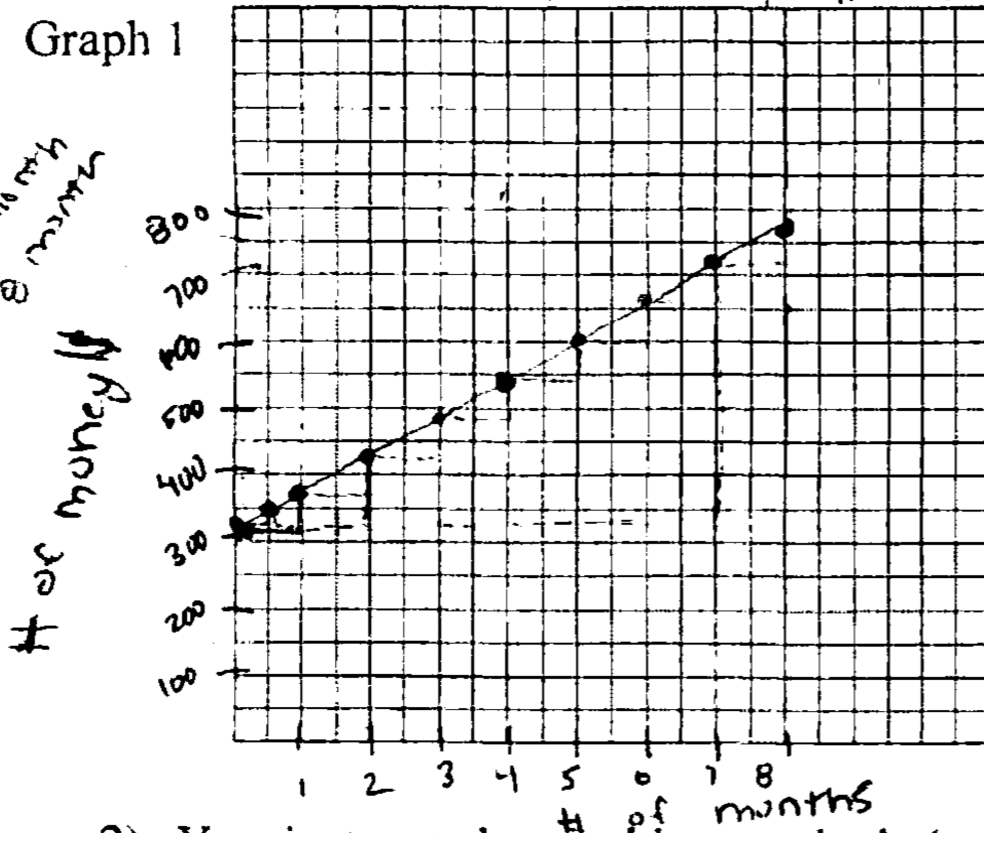
$$\begin{array}{r} 320 \\ + 125 \\ \hline 445 \end{array}$$

$$\begin{array}{r} 440 \\ + 320 \\ \hline 760 \end{array}$$

$$\begin{array}{r} 55 \\ + 8 \\ \hline 63 \end{array}$$

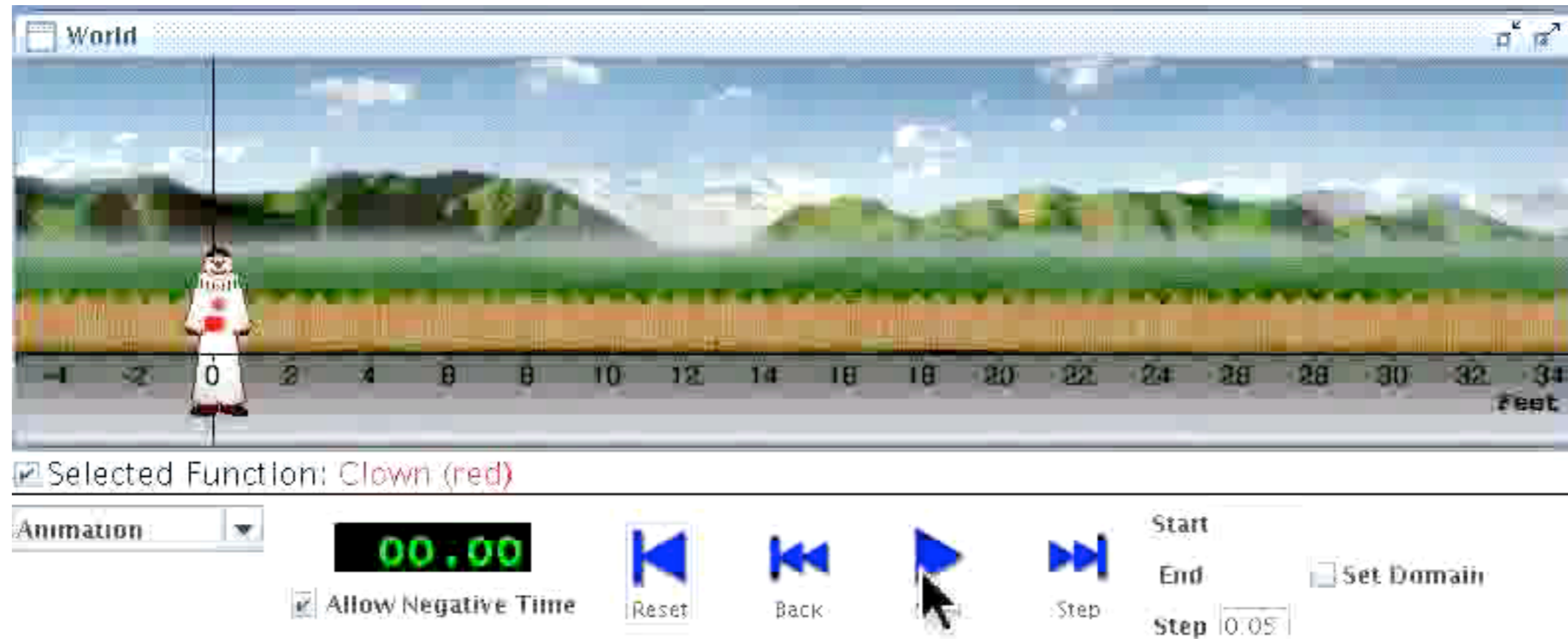
160 = 8 months
 175 = 1 month
 375

Graph 1



Clown takes a walk

Clown takes a walk



The screenshot displays a physics simulation window titled "World". The main view shows a 3D scene with a clown character standing on a flat ground surface. The clown is wearing a white outfit with a red circle on the chest. The background features a green field, a brown fence, and a blue sky with white clouds. A horizontal axis at the bottom of the scene is labeled "Feet" and has numerical markers from -4 to 34 in increments of 2. The clown is positioned at the 0 mark.

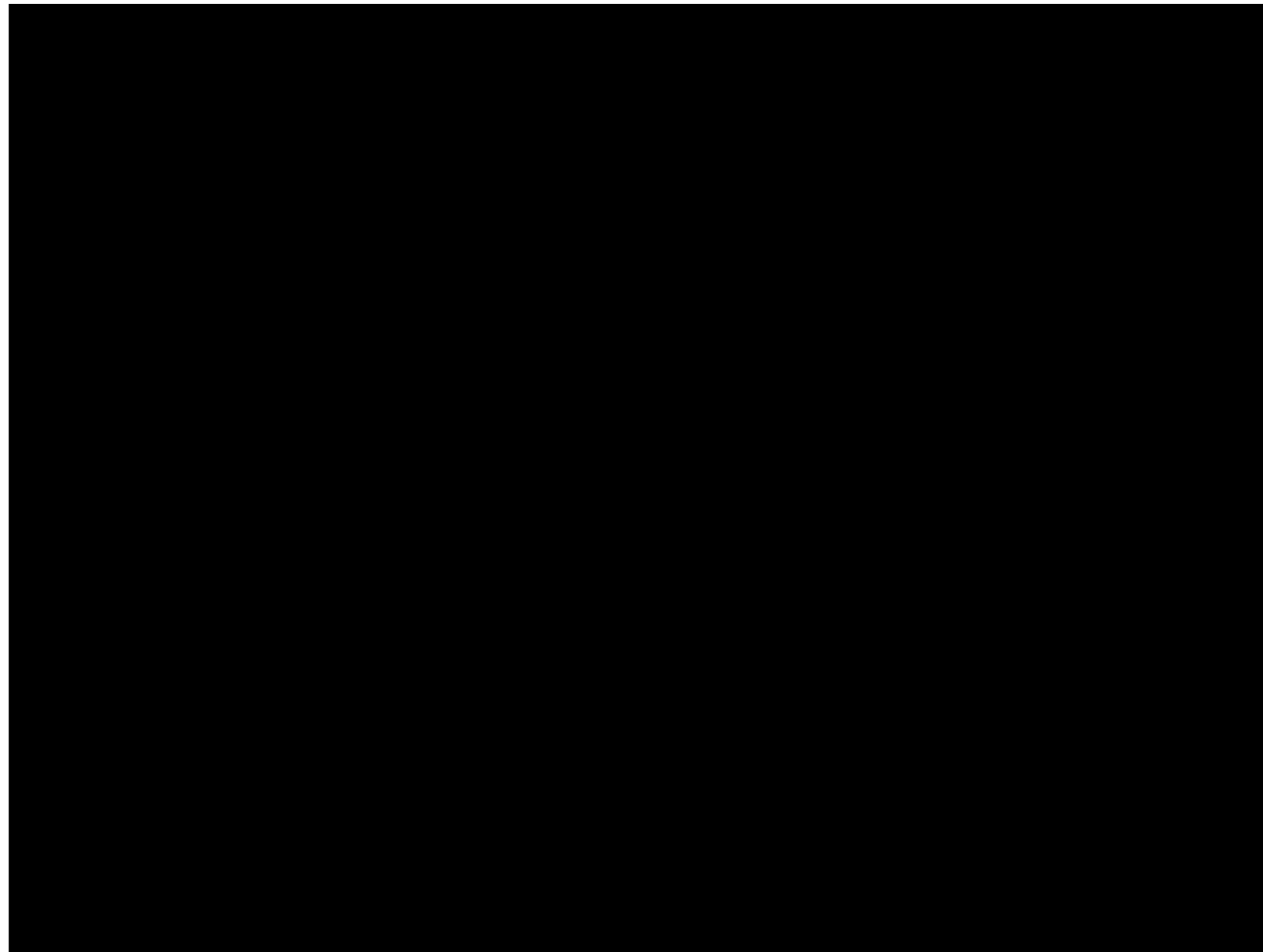
Below the scene, the interface includes the following controls:

- Selected Function: Clown (red)
- Animation:
- Allow Negative Time
- Reset (blue left arrow icon)
- Back (blue double left arrow icon)
- Step (blue right arrow icon with a mouse cursor over it)
- Start (text label)
- End (text label)
- Step (text label)
- Set Domain

What is a graph?

With Students

With Students



What did I do differently?

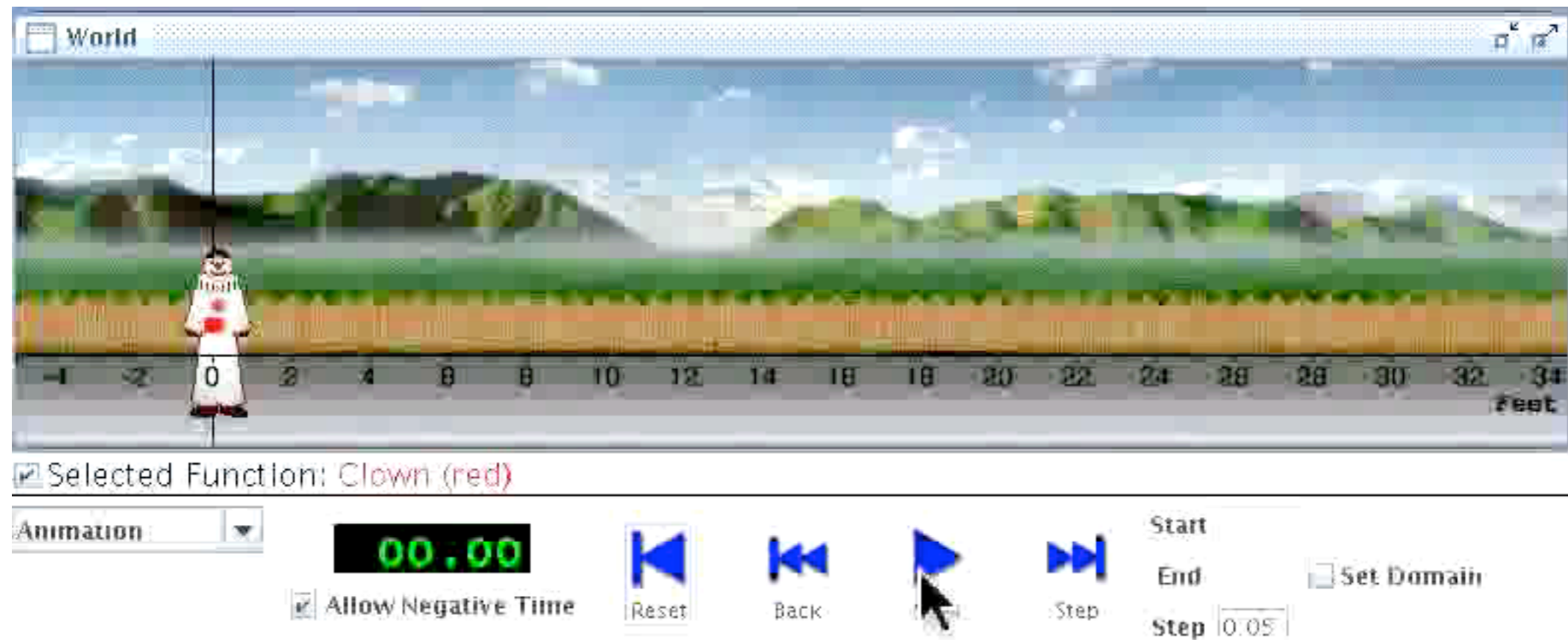
(and why?)

Fingertool for iPad

[http://www.math.ksu.edu/~cwcg/demo/
08_fingertool.html](http://www.math.ksu.edu/~cwcg/demo/08_fingertool.html)

[http://www.math.ksu.edu/~cwcg/demo/
08_fingertool.html](http://www.math.ksu.edu/~cwcg/demo/08_fingertool.html)

http://www.math.ksu.edu/~cwcg/demo/08_fingertool.html



World

Selected Function: Clown (red)

Animation

00.00

Allow Negative Time

Reset

Back

Step

Start

End

Step 0.05

Set Domain

Feet